

The
IMPERIAL
HOTEL AND CONVENTION CENTRE
PHITSANULOK

FACTSHEET



Phitsanulok, Thailand

The
IMPERIAL
 HOTEL AND CONVENTION CENTRE
 PHITSANULOK

Imperial Hotel and Convention Centre Phitsanulok features 11 meeting rooms with over 1,500 sqm meeting space at the Phitsanulok Convention Centre and 6 small meeting rooms. All professionally designed meeting facilities are perfect for everything from small meetings up to 20 or so and full-blown conferences in the prestigious The Phitsanulok Convention Hall that accommodates up to 2,000 persons. It is the ideal Phitsanulok venue for conferences, launch events and banquets. The hotel has parking for up to 500 cars. All meeting facilities are fully equipped with modern audio visual equipment and MICE materials.

Meeting Room	Dimensions (metres)			Banquet/Event		Meeting/Convention			
	Name	W x L	Sqm	Ceiling Height	Banquet	Cocktail	Conference	U-shape	Classroom
Phitsanulok Convention Hall	44 x 35	1,540	10	1,200	1,500	500	500	1,000	2,000
Convention Hall	20 x 35	700	10	540	700	200	200	450	1,000
Wangpikul 1	10 x 20	200	6	100	120	50	50	100	150
Wangpikul 2	10 x 10	100	6	50	60	25	25	40	70
Wangthong 1	10 x 20	200	6	100	120	50	50	100	150
Wangthong 2	10 x 10	100	6	50	60	25	25	40	70
Wangtara	15 x 28	420	8	250	300	120	120	250	500
Aranyika	20 x 20	400	10	200	250	100	100	140	300
Tararin	6 x 12	72	3	30	40	25	25	30	40
Noen Maprang 1	5 x 10	50	2.6	20	30	15	15	20	30
Noen Maprang 2	5 x 10	50	2.6	20	30	15	15	20	30
Noen Maprang 3	5 x 10	50	2.6	20	30	15	15	20	30
Pool Side	-	-	-	350	500	-	-	-	-



PHITSANULOK CONVENTION HALL



WANGPIKUL



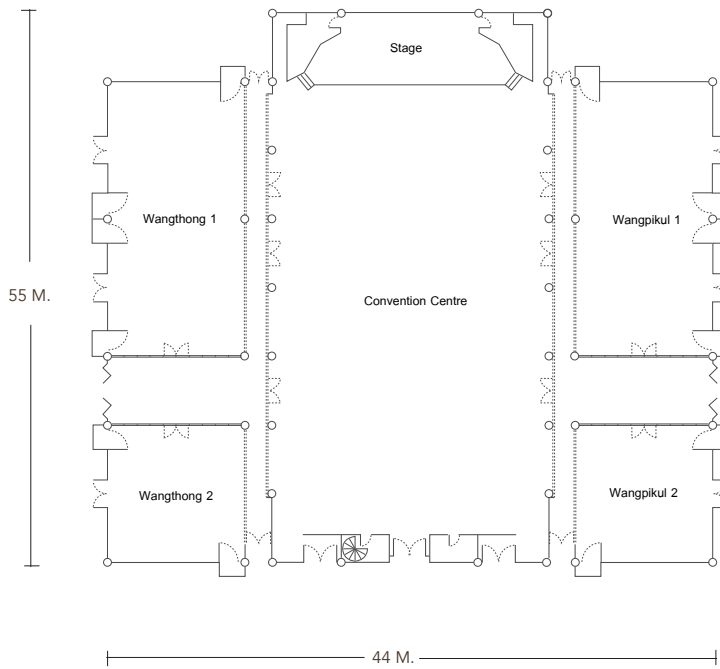
ARANYIKA



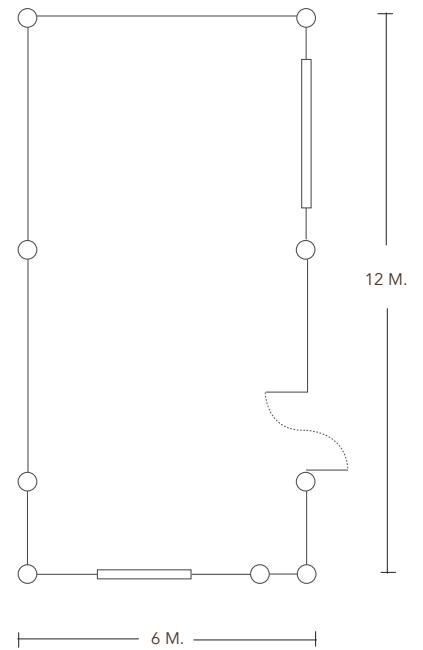
WANGTARA

MEETING ROOM FLOOR PLAN

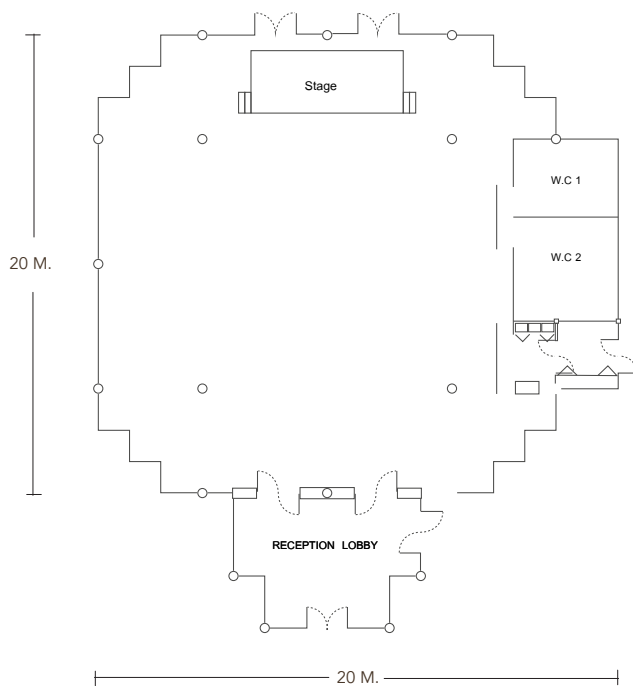
MEETING ROOM | **PHITSANULOK CONVENTION HALL**
2,000 SEATS



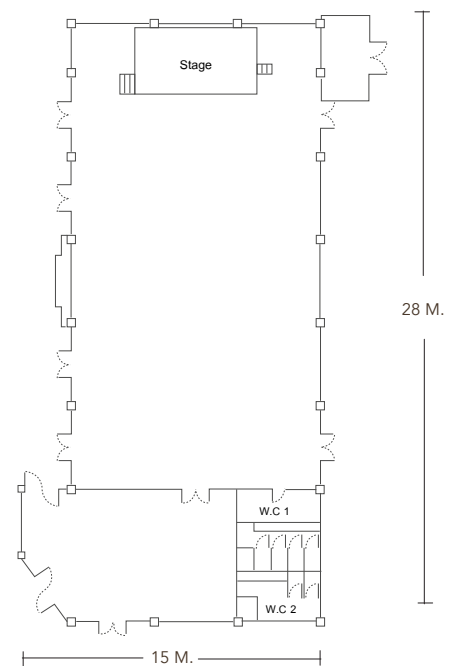
MEETING ROOM | **TARARIN**
40 SEATS



MEETING ROOM | **ARANYIKA**
300 SEATS



MEETING ROOM | **WANGTARA**
500 SEATS





The Imperial Hotel and Convention Centre Phitsanulok located in the idyllic province of Phitsanulok, features 292 spacious, clean, and comfortable guest rooms, fully-appointed guestrooms, Imperial Restaurant, Imperial Lounge, a lagoon-shaped swimming pool, full-scale fitness and Imperial Massage. Strategically located in the city center of Phitsanulok, just 15 minutes from Phitsanulok Airport, steps from Chaloe Phrakiat 80th Year Park, and one hour from Sukhothai Historical Park.

ACCOMMODATION

Superior	35 sqm	35
Deluxe	35 sqm	150
Executive	35 sqm	98
Junior Suite	70 sqm	1
Duplex Suite	72 sqm	6
Imperial Suite	80 sqm	2

ROOM FEATURES

- Air-Conditioning
- Bathroom Amenities
- Free WiFi
- Coffee and Tea Making Facilities
- Flatscreen TV
- Hairdryer
- 2 Complimentary Bottles of Water Daily
- Working Desk

HOTEL FACILITIES

Swimming Pool	9:00 hrs. - 20:00 hrs.
Fitness Centre	9:00 hrs. - 21:00 hrs.
Imperial Massage	13:00 hrs. - 23:00 hrs.
Parking Space (500 cars)	24 hrs.

GUEST SERVICES

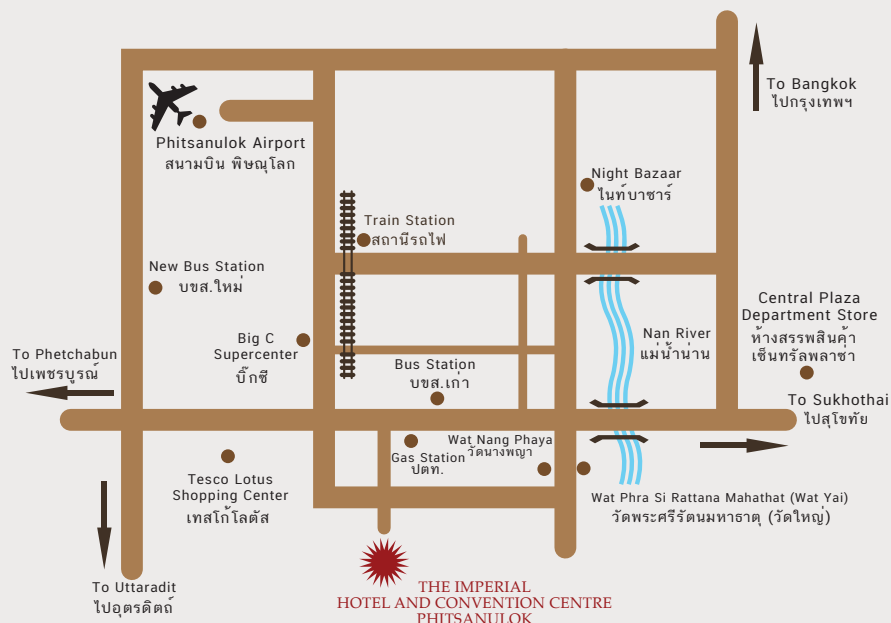
Airport Transfer	upon request
Chartered Car Service *For A Fee	6:00 hrs. - 23:00 hrs.
Laundry & Dry clean Service	8:00 hrs. - 17:00 hrs.
Room Service	6:00 hrs. - 23:00 hrs.
Free WiFi Access in Public Areas	24 hrs.

RESTAURANTS & BAR

Imperial Restaurant	6:00 hrs. - 23:00 hrs.
Imperial Lounge	6:00 hrs. - 23:00 hrs.
Pool Bar	10:00 hrs. - 20:00 hrs.

ATTRACTIONS

Wat Phra Sri Rattana Mahathat	3.4 km.
Market	4.7 km.
Kek River Rafting	59 km.
Noen Maprang	70 km.
Phu Hin Rong Kla National Park	119 km.
Thung Salaeng Luang National Park	137 km.



ADDRESS

The Imperial Hotel and Convention Centre Phitsanulok
52/299 Pra-Ongkhao Rd., Aranyik, Muang, Phitsanulok, 65000, Thailand

Sales Office:
Tel: +66 (0) 5522 0999



www.imperialphitsanulok.com

Imperialphitsanulok

@imperialphitsanulok

Email: info@imperialphitsanulok.com

GDS Code:

Sabre Galileo Amadeus
320505 E6260 PHS863

Reservation Center
Tel: +66 (0) 2 237 7700 # 2561
Mon - Fri 08:30 - 17:00 hrs.
Email: rsvn@imperialhotels.com
www.imperialhotels.com